

Director : Dr . Hsi -chi en Hu, MD.

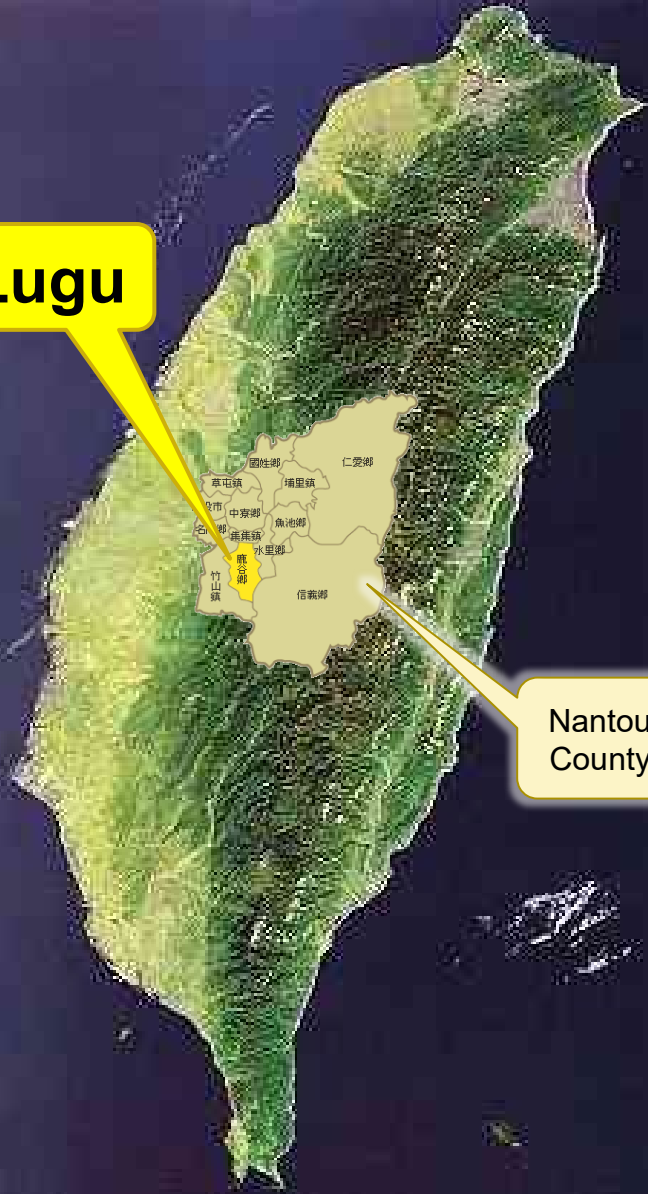
# **INTRODUCTION TO LUGU HEALTH STATION**

# **Geography of Lugu Township**

# Lugu Township

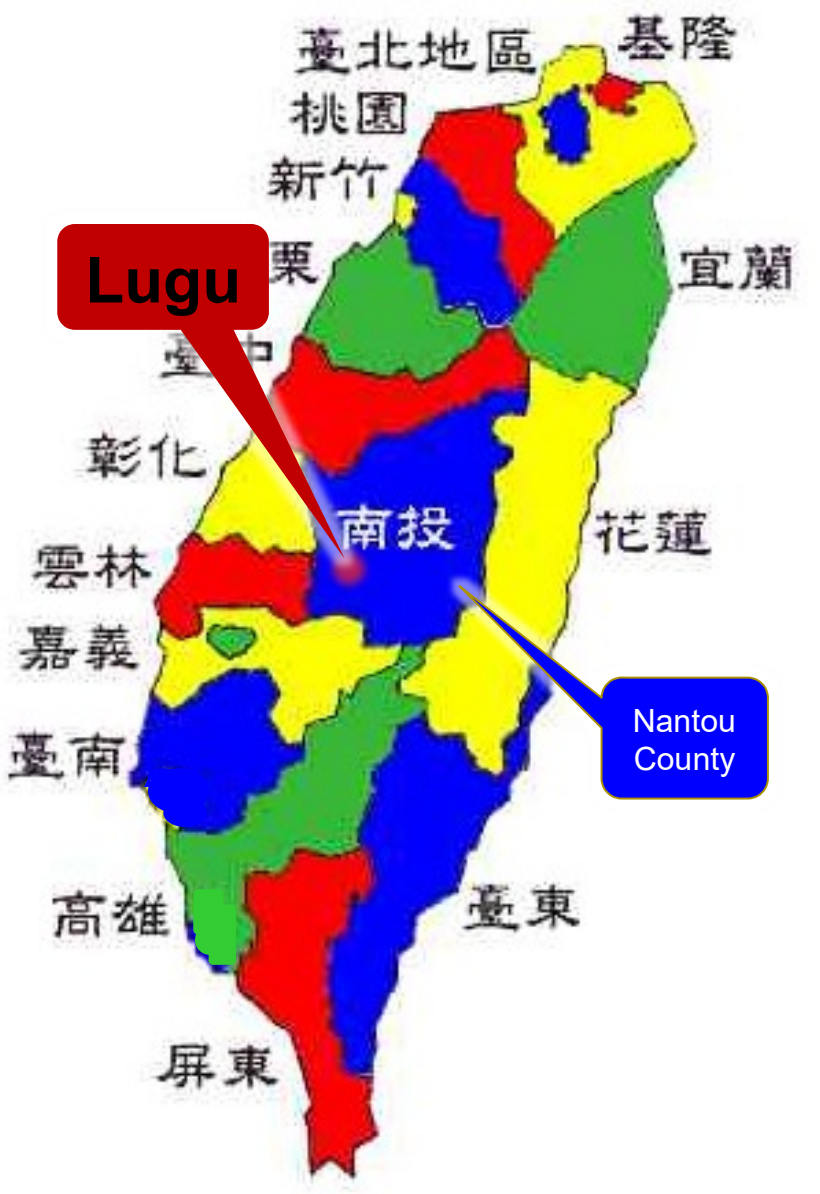
- Belongs to Nantou County, located in the central portion of Taiwan
- A rural, mountainous, and scenic township
- Total land scale : 149 km<sup>2</sup>
- 13 villages and 7,763 households
- Population density : 127 persons/km<sup>2</sup>

Lugu



Nantou County

Lugu



Nantou County

# Jurisdiction

- A total of 13 villages, the following diagram jurisdiction :



# Local Culture

- Agriculture
- Main crops :

tea



bamboo shoot



# **Demography of Lugu Township**

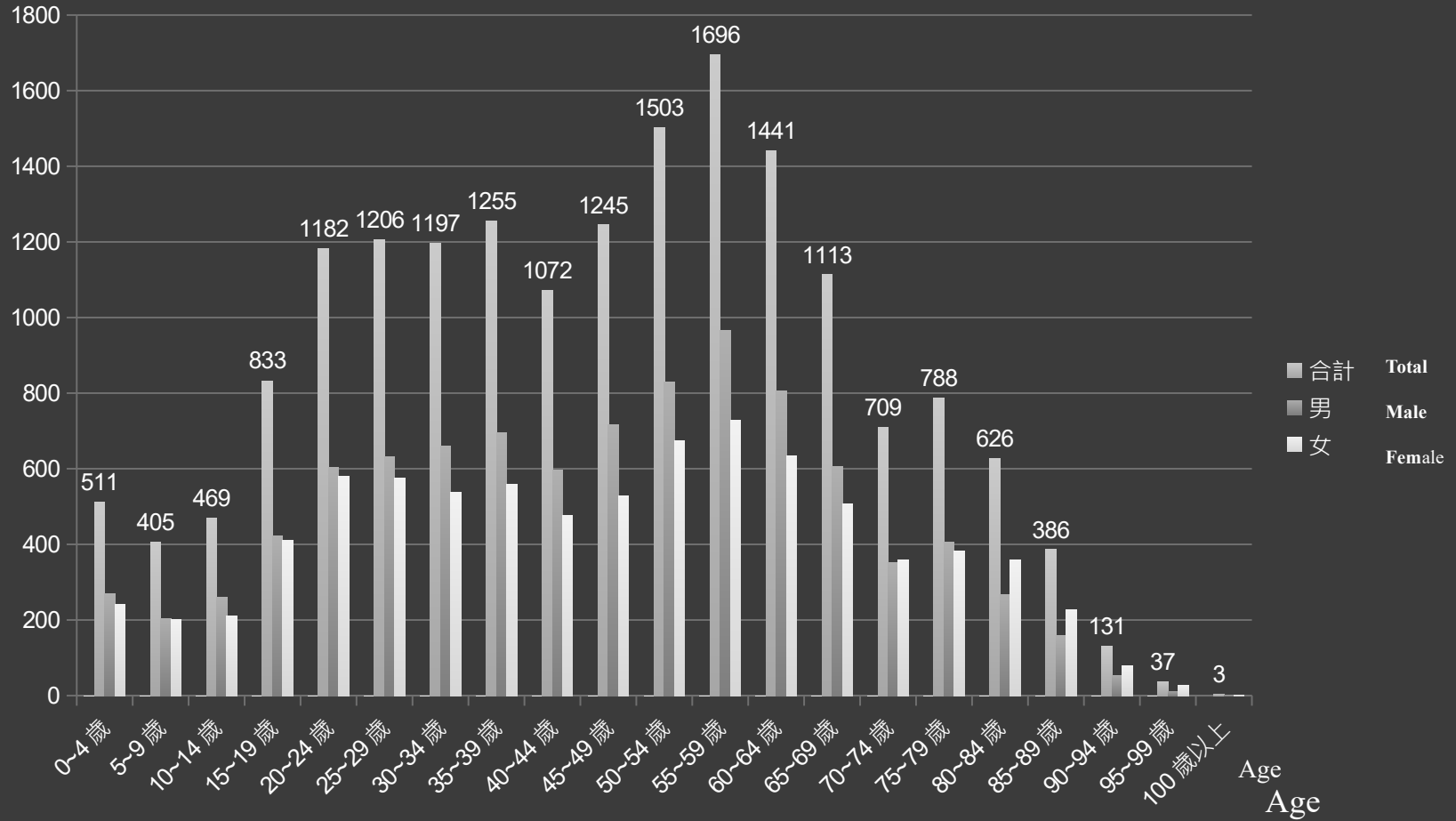
# Demography

- Total population : 17,808 till Dec. 2017  
Male : 9,511 , Female : 8,297
- Aged population rate :  
 $3,793/17,808=21.29\%$
- Dependent population rate : 29.0%



# Age Structure

Person

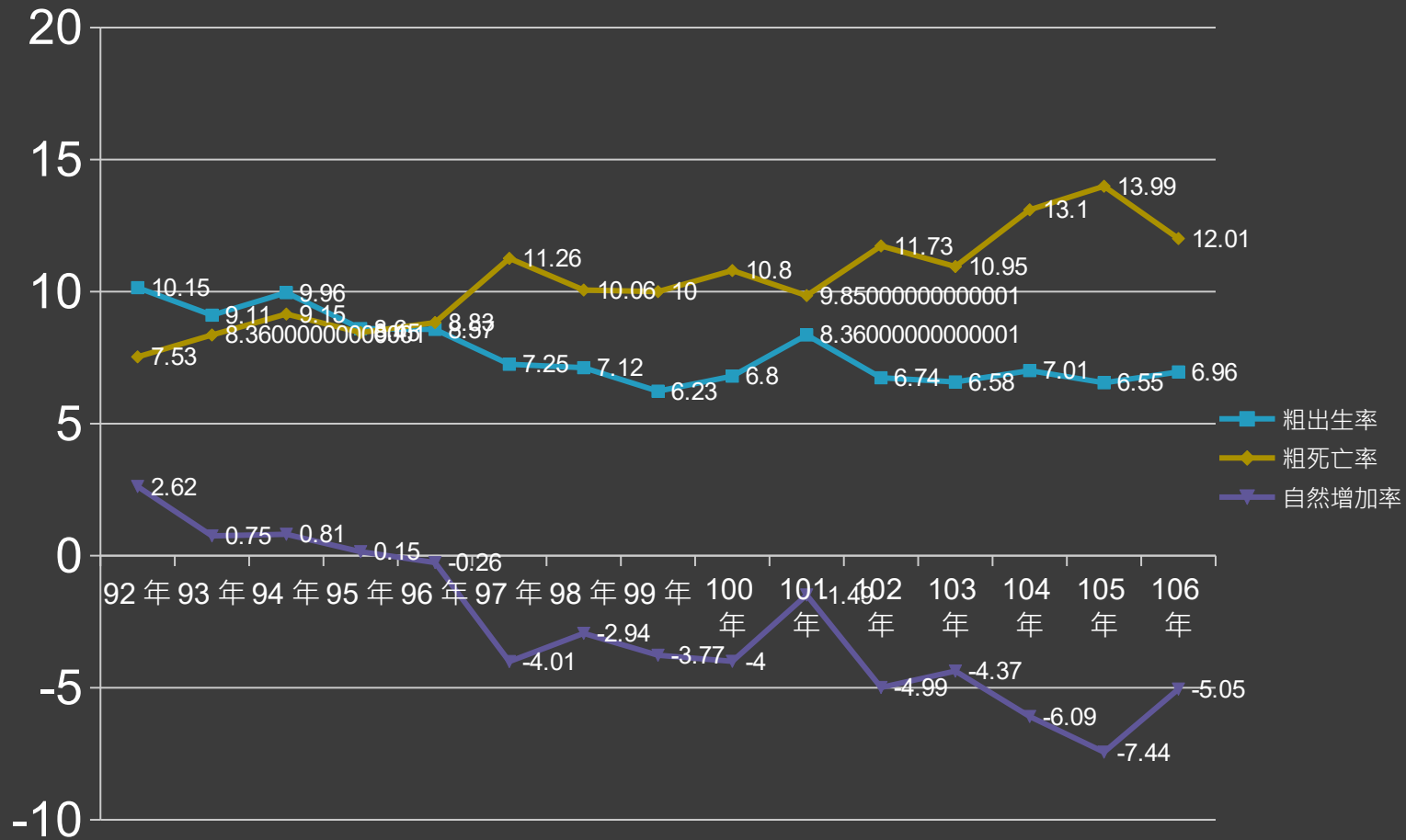


# **Vital Statistics**

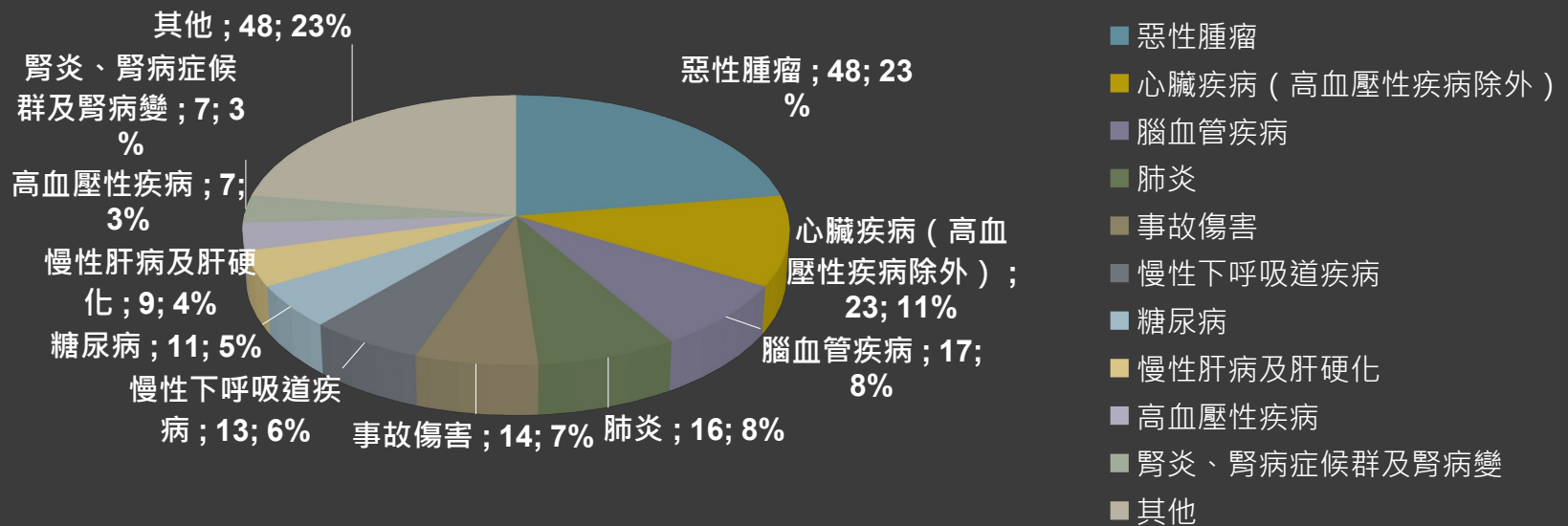
# Vital Statistics

- Crude birth rate in 2017 : 6.96 ‰
- Crude death rate in 2017 : 12.01 ‰
- Natural growth rate in 2017 : -5.05 ‰
- Infant mortality rate in 2017 : 0‰
- Maternal mortality rate in 2017 : 0‰

# Trend of Natural Growth Rate



# Ten Leading Causes of Death in 2010

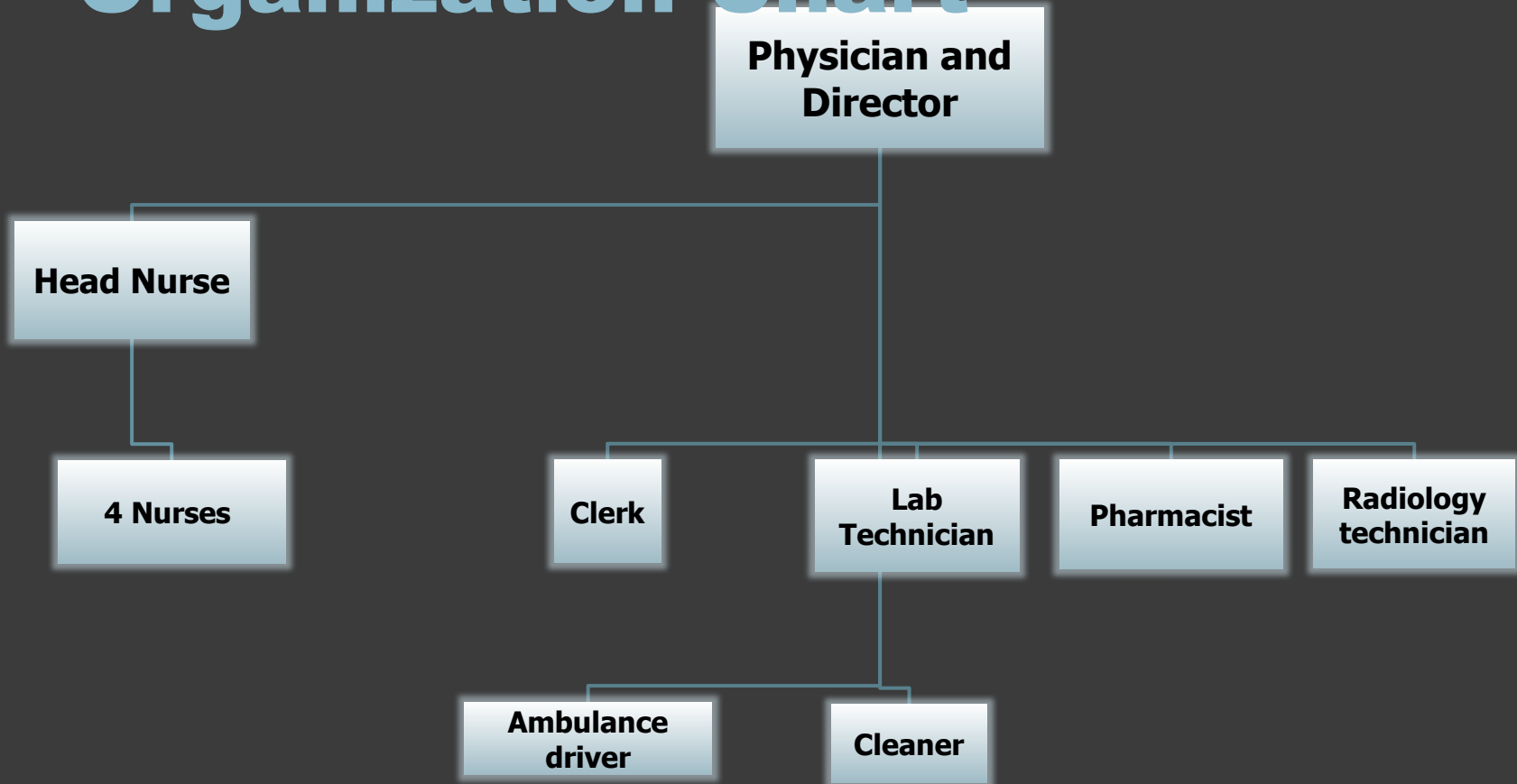


# **Organization and Manpower of Lugu Health Station**

# Manpower of Lugu Health Station

- Physician : 1
- Head nurse : 1
- Public health nurses : 5
- Pharmacist : 1
- Lab technician : 1
- Radiology technician : 1
- Clerk : 1
- Ambulance driver : 1
- Cleaner : 1
- Volunteers : 48

# Organization Chart





# **Medical Affairs**

# Medical Affairs

1. Administration of healthcare organizations
2. Administration of medical professional practices
3. Medical advertising regulations and enforcement
4. Long-term care
5. Psychiatric health
6. Prevention of suicide
7. Prevention of domestic violence and sexual assault
8. Disaster and emergency network
9. Activity assistance and rescue dispatch
10. Post-mortem examination

# Medical Resources

- Health station : 1
- Western Medicine Clinics : 3
- Chinese Medicine Clinics : 1
- Dental clinics : 2

# Number of People Received Medical Care

- Outpatient services
  - 23,070 in 2017
- Medical service for remote districts
  - 3,083 in 2017
- Physical exam
  - 203 in 2017

# **Pharmaceutical Affairs**

# Pharmaceutical Affairs

1. Pharmaceutical advertising regulations and enforcement (including drugs, cosmetics and medical equipments)
2. Inspection of illegal pharmaceutical products (including illegal drugs, cosmetics and medical equipments )
3. Inspection of controlled drugs
4. Prevention of substance abuse and promotion of drug-use safety
5. Administration of pharmaceutical dealers, drug stores, and pharmacists' practice

# Number of Drug Stores

- Drug stores : 6
- Traditional Chinese Drugstores : 6

# **Food Safety and Inspection Activities**



# Food Safety and Inspection Activities

1. Sanitation Management of food dealers
2. Food advertising regulations enforcement
3. Management of hygiene in public dining areas and restaurants
4. Food sanitation and nutrition education
5. Surveillance on outbreak of food poisoning

# **Health Promotion**

# Affairs of Health Promotion

1. Maternal, infant and genetic health
2. Child and adolescent health promotion
3. Prevention and control of chronic diseases for adults and elderly
4. Cancer control and prevention
  - a. Cervical cancer
  - b. Breast cancer
  - c. Oral cancer
  - d. Colon cancer
5. Tobacco control
6. Community-based integrated preventive health care services

# Number of Spouses of Foreign Origins

Country	No.
China Mainland	139
Japan	4
Indonesia	55
Kampuchea	9
England	1
USA	2
Thailand	3
Philippines	8
Vietnam	149
Korea	7
Total	371

# **Disease Control and Prevention**

# Affairs of Disease Control and Prevention

1. Prevention & control of epidemic disease
2. Immunization
3. Occupational sanitation

# Vaccination Rate

Item	Rate
BCG	100.00%
HepB3	99.01%
MMR	94.06%
DTaP3+IPV3+Hib3	99.01%
DTaP4+IPV4+Hib4	87.00%
JE3	96.33%
Var	93.07%

# Laboratory Testing



# Lab Items

- Biochemistry : Chol. TG. HDL.LDL. Glu.  
BUN. Cr. UA.GOT. GPT.  
TSH.Free-T4. Anti-HAV.  
HBsAg. Anti-HCV. HbA1c.  
Microalbumin.RA factor...etc.
- Urine exam : Urine Routine .
- Blood exam : Blood Routine. Blood Type
- Test for venereal disease : VDRL. Anti-HIV.
- Biological exam : EKG



## Vision

We are striving to provide a continuing, comprehensive, and coordinating care for our residents. And we believe the dream will come true someday.